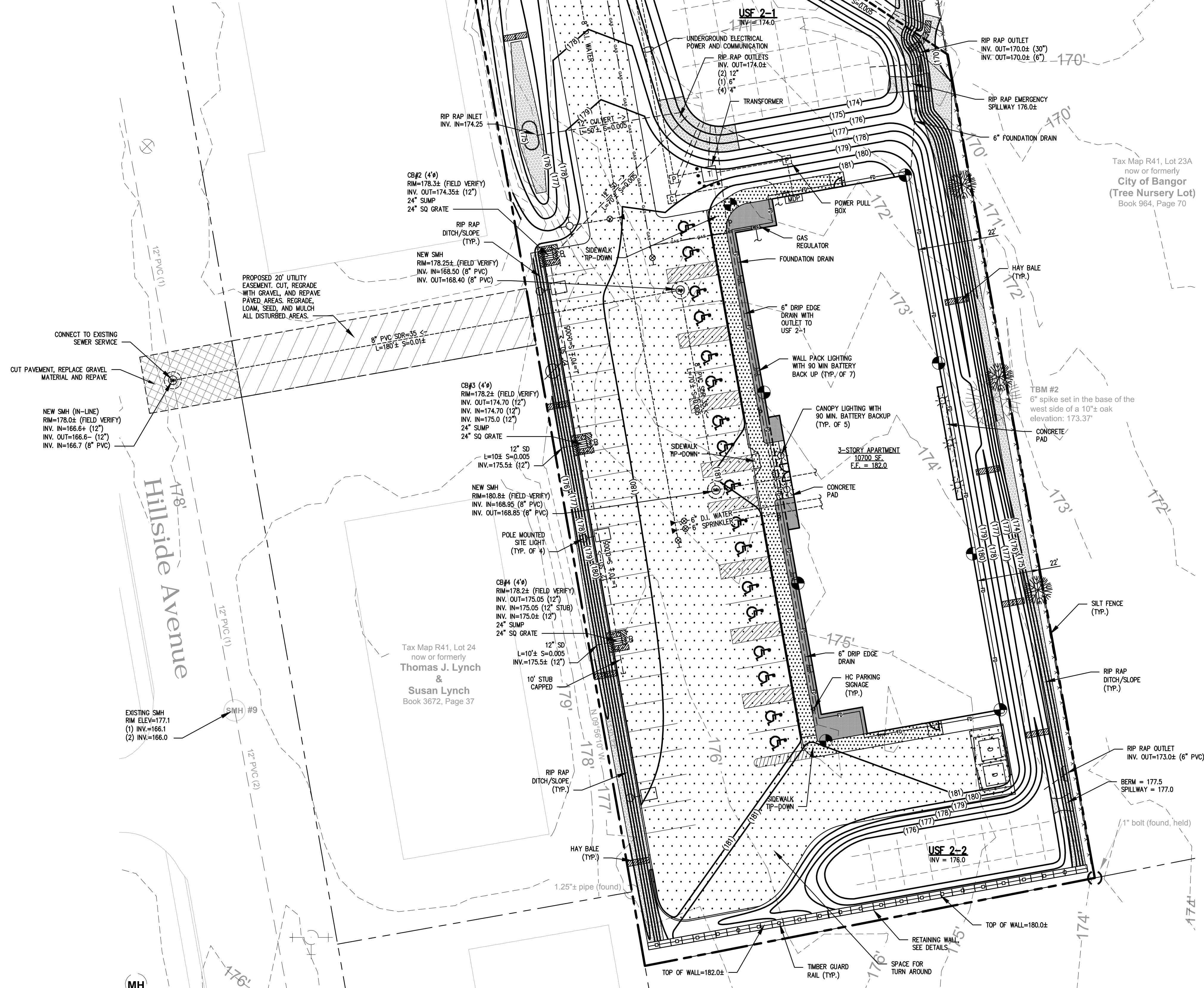


NOT TO SCALE

Tax Map R41, Lot 24C
now or formerly
Timothy M. Mcleod & Kathryn F. Mcleod
Book 13050, Page 114

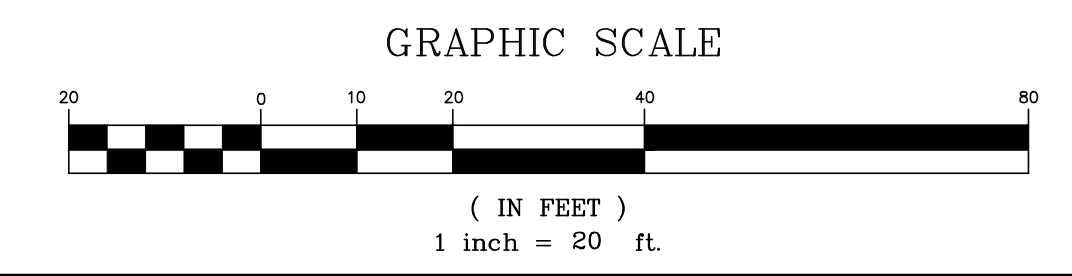
Invert 24"± CMP elevation (debris): 173'±



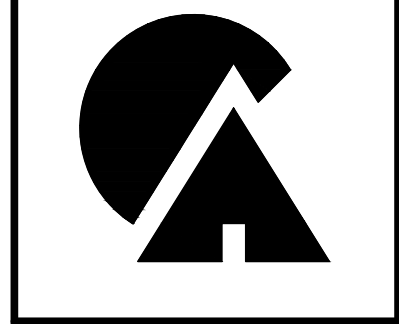
- GENERAL NOTES:**
- PLAN BASED ON A SURVEY COMPLETED BY PLUSGA & DAY.
 - WETLAND DELINEATION PROVIDED BY LEE BURMAN OF BURMAN LAND & TREE COMPANY, L.L.C.
 - THE ZONING CLASSIFICATION IS M&SD. MOST OF THE SOILS CLASSIFICATION ARE BANGOR SILT LOAM, MODERATELY DEEP 2 TO 8 PERCENT SLOPES (BmB).
 - CONTRACTOR TO REVIEW SOILS BORING REPORT COMPLETED BY S.W. COLE.
 - CONTRACTOR SHALL CONTACT DIGSAFE PRIOR TO ANY EXCAVATION WORK.
 - CONSTRUCTION ACTIVITIES OCCURRING AFTER NOVEMBER 15TH SHALL INCORPORATE A WINTER CONSTRUCTION PLAN WHICH SHALL BE APPROVED BY THE CITY OF BANGOR.
 - ALL CURB AND PAVEMENT STRIPING RADII SHALL BE 5' UNLESS OTHERWISE NOTED.
 - CONTRACTOR TO ADD 4" RIGID INSULATION OVER ALL PIPES CROSSING THE DRIVEWAY, WALKWAY OR PARKING LOT AREA.
 - THE CONTRACTOR SHALL TAKE MEASURES TO PREVENT SEDIMENT AND OTHER POLLUTANTS FROM ENTERING EXISTING DRAINAGE WAYS AND OTHER STORM WATER CONVEYANCES LOCATED ON THE SITE. CONTRACTOR MUST ADHERE TO BEST MANAGEMENT PRACTICES.
 - ALL SITE WORK INCLUDING SEWER, STORM, ETC. MUST MEET CITY OF BANGOR STANDARDS.
 - ELECTRICAL WORK MUST BE COORDINATED WITH EMERA.
 - WATER UTILITY WORK MUST ADHERE TO BANGOR WATER DISTRICT STANDARDS.
 - GRADING SHALL NOT ENCRONCH ON NEIGHBORING PROPERTIES.
 - PROVIDE EXTERIOR OF BUILDING WITH (7) WALL PACKS, AND (5) CAN STYLE LIGHTS. ALL EXTERIOR BUILDING LIGHTING SHALL BE PROVIDED WITH 90 MINUTE BATTERY BACKUP.
 - MEASUREMENTS FROM BUILDING REFERENCED TO FOUNDATION.

LEGEND

EXISTING	PROPERTY LINE	PROPOSED
---	PROPERTY LINE	---
⊗	UTILITY POLE	⊗
---	WATER	---
---	SEWER	---
---	STORM DRAIN	---
---	FOUNDATION DRAIN	---
---	UNDERGROUND ELECTRIC	---
---	FIBER OPTIC CABLE	---
---	SILT FENCING	---
---	*NATURAL GAS	---
⊗	CATCH BASIN - CB	⊗
⊗	FIELD DRAIN MANHOLE TYPE-F	⊗
⊗	DRAIN MANHOLE (DMH)	⊗
⊗	SEWER MANHOLE (SMH)	⊗
⊗	SIGNAGE	⊗
⊗	BORINGS	⊗
⊗	HYDRANT	⊗
⊗	GATE VALVE	⊗
⊗	THRUST BLOCK	⊗
⊗	TEMPORARY BENCH MARK (TBM)	⊗
⊗	DECIDUOUS TREE (TYP.)	⊗
⊗	BUSH (TYP.)	⊗
⊗	EVERGREEN TREE (TYP.)	⊗
⊗	EXTERIOR CANOPY LIGHT	⊗
⊗	EXTERIOR WALL PACK LIGHT (90 MIN. BATTERY BACKUP)	⊗
⊗	SITE LIGHTS (POLE MOUNT)	⊗
⊗	TOC - TOP OF CURB (BITUMINOUS)	⊗
⊗	BOC - BOTTOM OF CURB (BITUMINOUS)	⊗
⊗	EOP - EDGE OF PAVEMENT	⊗
⊗	PAVEMENT	⊗
⊗	SIDEWALK	⊗



95% REVIEW
04-01-2020



CARPENTER ASSOCIATES
CONSULTING ENGINEERS
687 STILLWATER AVENUE • OLD TOWN • MAINE 04468

REVISIONS

NO.	DATE	DESCRIPTION

PENQUIN HOUSING
NEWTON PLACE
GRANDVIEW AVE. BANGOR, MAINE

Drawn: JE
Checked: RB
Scale: 1" = 20'
Date: 03-06-2018
Project No: 2020013
Sheet Number:

C3A